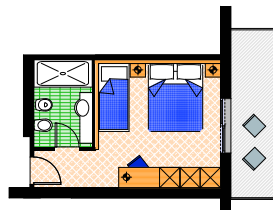


**Standard room**

ca. 19,00 m<sup>2</sup>

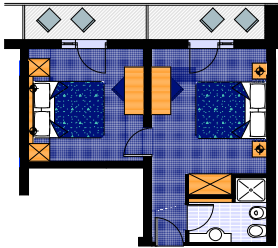
Occupation min. 2 people - max 3 people



**Triple room**

ca. 20,00 m<sup>2</sup>

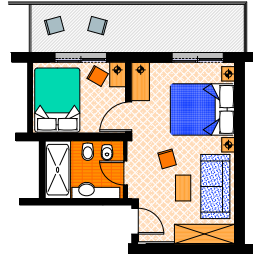
Occupation min. 2 people - max 3 people



**Family**

ca. 30,00 m<sup>2</sup>

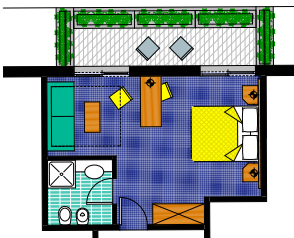
Occupation min. 3 people - max 4 people



**Family Superior**

ca. 30,00 m<sup>2</sup>, small living room

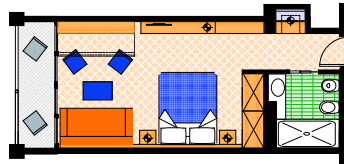
Occupation min. 4 people - max 5 people



**Juniorsuite**

ca. 25,00 m<sup>2</sup>

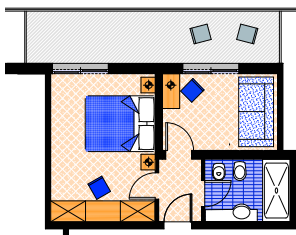
Occupation min. 2 people - max 4 people



**Juniorsuite deluxe sea view**

ca. 26,00 m<sup>2</sup>

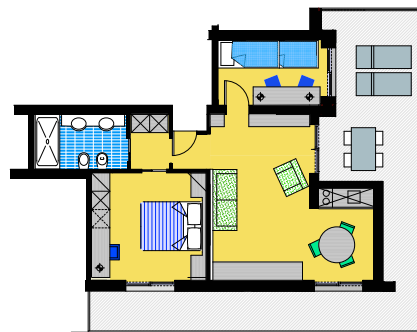
Occupation min. 2 people - max 2 people



**Suite**

ca. 26,00 m<sup>2</sup>

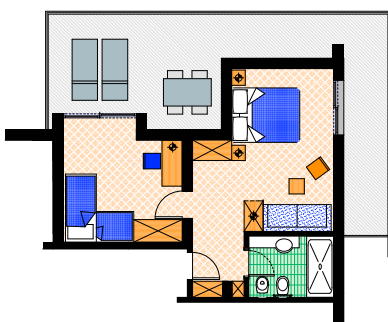
Occupation min. 2 people - max 2 people



**Suite Major**

ca. 45,00 m<sup>2</sup>, small kitchenette, small living room

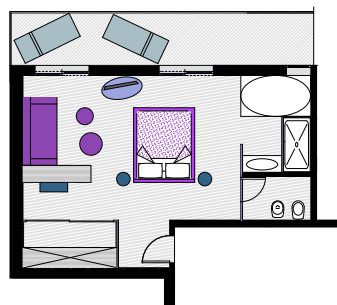
Occupation min. 4 people - max 6 people



**Suite Superior**

ca. 32,00 m<sup>2</sup>, small living room

Occupation min. 4 people - max 5 people



**Suite Royale sea view**

ca. 38,00 m<sup>2</sup>, king size bed, whirlpool

Occupation min. 2 people - max 2 people

**33054 Lignano Sabbiadoro (Ud)**

**Via dell'Arenile, 22**

**Tel. +39.0431.720101 / 71134**

**Fax +39.0431.472005**

**mail@hotelflorida.net - www.hotelflorida.net**

**skype: hotelflorida3**

**Winter mobile phone +39.348.8083564**

The Hotel Florida is a family - managed establishment, where to spend the most beautiful days of the year in a natural and cheerful atmosphere, or in absolute peace: just as you prefer.

Recently renewed, our hotel is ideally located in a quiet area, nestled in the pinewood, both close to the sandy beach and to the city centre.

Besides the facilities that Lignano puts at your disposal, our hotel offers you a wide range of amusement possibilities, such as: in the indoor wellness area, at the 6th floor, steam bath, sauna, relax zone, sunbed and a small fitness centre; at the 7th floor, a heated indoor swimming pool with whirlpool and waves, lounge bar overlooking the sea where you can enjoy à la carte small lunches and a hot cold buffet.

On the 8th floor, a panoramic solarium with deck lounges. Free towels for the swimming pool and for the wellness centre.

On the ground floor, a comfortable bar with a Continental breakfast service starting from 11:00 am, a lobby and sheltered terrace, a mini club and a small outdoor playground, where to entertain our little Guests. Free wireless connection in the whole structure, as well as a giant screen with satellite connection to foreign channels allowing the vision of the most common events.

Bicycles, a reserved beach, air-conditioning/heating are included while the 87 places in the detached parking garage are to be extra charged.

Our rooms are of different typologies: standard room, junior suite, suite superior, suite royal, suite major, family, family superior and juniorsuite deluxe with sea view, are all provided with private bathroom (box-shower/wc), hairdryer, balcony, autonomous air-conditioning and heating, fridge mini-bar, direct dial telephone, satellite flat screen, and in-room safety box.

Particular attention to our cuisine, enriched with a generous breakfast buffet with pastries, and much more from 07:30 until 11:00 am, and rich dinner buffet of salads, vegetables, and appetizers during the dinner served from 19:00 until 20:30 o'clock. A baby menu for our little Guests.

To be extra charged: tanning bed, fridge minibar, golf car and garage, small lunch.

On request ad to be extra charged: massages, pranotherapy, beauty treatments.

# HOTEL FLORIDA – PRICE LIST 2016

RATES IN EURO, ON BED AND BREAKFAST BASIS, PER PERSON PER NIGHT

Valid for a minimum stay of 3 nights - Extra charge for a stay of less than 3 Nights: 10% per person/night

|  | <b>A</b>                       | <b>B</b>  | <b>C</b>                       | <b>D</b>                       | <b>E</b>      |
|--|--------------------------------|---|--------------------------------|--------------------------------|---------------|
|  | 31.03 - 11.05<br>24.09 - 15.10 | 24.03 - 30.03<br>12.05 - 25.05<br>10.09 - 23.09 | 26.05 - 01.07<br>03.09 - 09.09 | 02.07 - 05.08<br>21.08 - 02.09 | 06.08 - 20.08 |
| <b>STANDARD ROOM</b><br>Occupation min. 2 people / max. 3 people               | 69,40                          | 79,60   | 84,70                          | 89,80                          | 99,90         |
| <b>JUNIORSUITE</b><br>Occupation min. 2 people / max. 4 people                 | 82,00                          | 94,40   | 100,60                         | 106,60                         | 118,80        |
| <b>JUNIORSUITE DELUXE SEA VIEW</b><br>Occupation min. 2 people / max. 2 people | 94,80                          | 109,10  | 116,40                         | 123,40                         | 137,70        |
| <b>FAMILY</b><br>Occupation min. 3 people / max. 4 people                      | 74,00                          | 85,20   | 91,00                          | 96,50                          | 107,70        |
| <b>SUITE</b><br>Occupation min. 2 people / max. 2 people                       | 92,50                          | 105,70  | 113,20                         | 120,00                         | 134,30        |
| <b>FAMILY SUPERIOR</b><br>Occupation min. 4 people / max. 5 people             | 79,10                          | 90,90   | 96,80                          | 102,60                         | 114,40        |
| <b>SUITE SUPERIOR</b><br>Occupation min. 4 people / max 5 people               | 84,30                          | 96,60   | 102,60                         | 108,70                         | 121,10        |
| <b>SUITE MAJOR</b><br>Occupation min. 4 people / max. 6 people                 | 88,90                          | 102,30  | 108,90                         | 115,60                         | 128,80        |
| <b>SUITE ROYALE</b><br>Occupation min. 2 people / max. 2 people                | 113,30                         | 130,70  | 139,70                         | 148,10                         | 165,50        |
| <b>EXTRA CHARGES</b>   |                                |   |                                |                                |               |
| <b>EXTRA CHARGE FOR STANDARD ROOM AS SINGLE USE</b>                            | + 50%                          | + 50%   | + 50%                          | + 50%                          | + 50%         |
| <b>EXTRA CHARGE FOR FAMILY ROOM OCCUPATION 2 PEOPLE</b>                        | + 25%                          | + 25%   | + 25%                          | + 25%                          | + 25%         |
| <b>EXTRA CHARGE FOR THE HALF BOARD</b>   | + 15,00                        | + 15,00   | + 15,00                        | + 15,00                        | + 15,00       |
| <b>EXTRA CHARGE FOR THE GARAGE</b>   | FREE                           | + 6,00  | + 6,00                         | + 6,00                         | + 6,00        |

## CHILDREN - EXTRA BED

### IN STANDARD ROOM, JUNIORSUITE, WITH 2 FULL PAYING - PEOPLE

from 0 to 5 years of age FREE  
 from 6 to 8 years of age - 50%  
 from 9 to 12 years of age - 30%  
 from 13 to 99 years of age - 20%

### IN FAMILY, FAMILY SUPERIOR, SUITE SUPERIOR, SUITE MAJOR WITH 2 FULL PAYING - PEOPLE

from 0 to 5 years of age - 50%  
 from 6 to 8 years of age - 25%  
 from 9 to 12 years of age - 15%  
 from 13 to 99 years of age - 10%

## SPECIAL OFFERS

28.03 – 11.05  
25.09 – 15.10

**4 = 3**

24.03 – 30.03  
12.05 – 11.06  
11.09 – 24.09

**7 = 6**

12.06 – 06.08  
20.08 – 10.09

**14 = 13**

FOR ALL THE RESERVATIONS RECEIVED WITHIN 30TH APRIL 2016 YOU WILL GET 5 % DISCOUNT ON THE AMOUNT OF THE TREATMENT CHOSEN (EXTRAS AND EXTRA CHARGES EXCLUDED).

GARAGE FREE FOR MINIMUM STAYS OF 14 DAYS