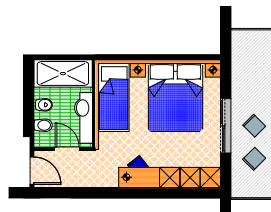


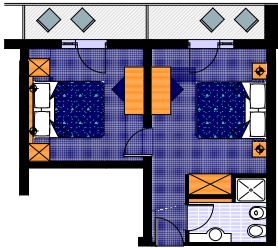
**Standard Room  
 Comfort Room**

ca. 19,00 m<sup>2</sup>  
 Occupation min. 2 people - max 3 people



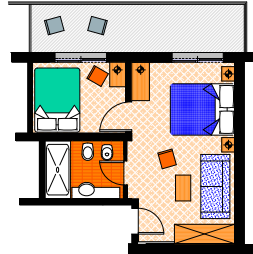
**Triple Room**

ca. 20,00 m<sup>2</sup>  
 Occupation min. 2 people - max 3 people



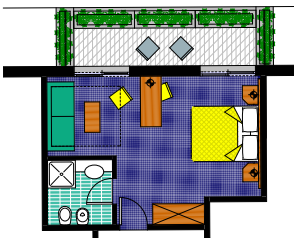
**Family**

ca. 30,00 m<sup>2</sup>  
 Occupation min. 3 people - max 4 people



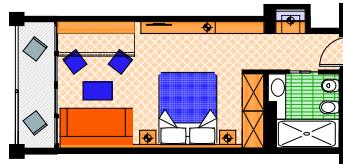
**Family Superior**

ca. 30,00 m<sup>2</sup>, small living room  
 Occupation min. 4 people - max 5 people



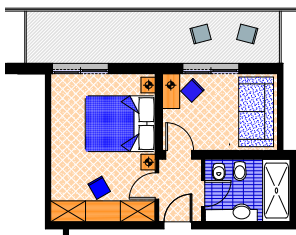
**Juniorsuite**

ca. 25,00 m<sup>2</sup>  
 Occupation min. 2 people - max 4 people



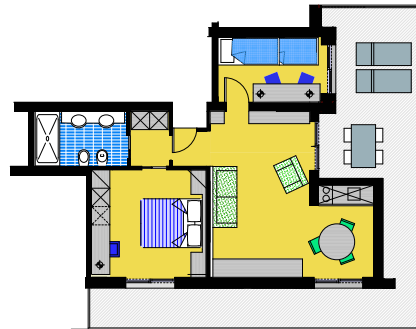
**Juniorsuite Deluxe sea view**

ca. 26,00 m<sup>2</sup>  
 Occupation min. 2 people - max 2 people



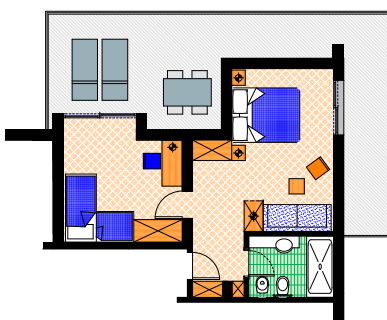
**Suite**

ca. 26,00 m<sup>2</sup>  
 Occupation min. 2 people - max 2 people



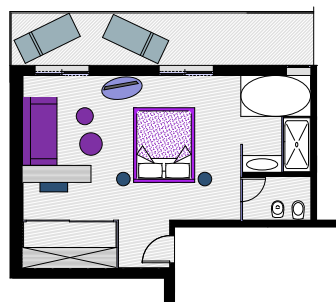
**Suite Major**

ca. 45,00 m<sup>2</sup>, small kitchenette, small living room  
 Occupation min. 4 people - max 6 people



**Suite Superior**

ca. 32,00 m<sup>2</sup>, small living room  
 Occupation min. 4 people - max 5 people



**Suite Royale sea view**

ca. 38,00 m<sup>2</sup>, king size bed, whirlpool  
 Occupation min. 2 people - max 2 people

33054 Lignano Sabbiadoro (Ud)

Via dell'Arenile, 22

Tel. +39.0431.720101 / 71134

Fax +39.0431.472005

mail@hotelflorida.net - www.hotelflorida.net

skype: hotelflorida3

Winter mobile phone +39.348.8083564

The Hotel Florida is a family - managed establishment, where to spend the most beautiful days of the year in a natural and cheerful atmosphere, or in absolute peace: just as you prefer.

Recently renewed, our hotel is ideally located in a quiet area, nestled in the pinewood, both close to the sandy beach and to the city centre.

Besides the facilities that Lignano puts at your disposal, our hotel offers you a wide range of amusement possibilities, such as: in the indoor wellness area, on 6th floor, steam bath, sauna, relax zone, sunbed and a small fitness centre; on the 7th floor, a heated indoor swimming pool with whirlpool and waves, lounge bar overlooking the sea where to enjoy à la carte small lunches and a hot/cold buffet.

On the 8th floor, a panoramic solarium with deck lounges. Free towels for the swimming pool and for the wellness centre.

On the ground floor, a comfortable bar with a Continental breakfast service starting from 11:00 am, a lobby and sheltered terrace, a mini club and a small outdoor playground, where to entertain our little Guests. Free wireless connection in the whole structure, as well as a giant screen with satellite connection to foreign channels allowing the vision of the most common events.

Bicycles, a reserved beach, air-conditioning/heating are included while the parking places in the detached parking garage are to be extra charged.

Our rooms are of different typologies: standard room, comfort room, junior suite, suite superior, suite royal, suite major, family, family superior and juniorsuite deluxe with sea view, are all provided with private bathroom (box-shower/wc), hairdryer, balcony, autonomous air-conditioning and heating, fridge mini-bar, direct dial telephone, satellite flat screen, and in-room safety box.

Particular attention to our cuisine, enriched with a generous breakfast buffet with pastries, and much more from 07:30 until 11:00 am, and rich dinner buffet of salads, vegetables, and appetizers during the dinner served from 19:00 until 20:30 o'clock. A baby menu for our little Guests.

To be extra charged: tanning bed, fridge minibar, garage and small lunch.

On request and to be extra charged: massages, pranotherapy, golf car, beauty treatments.

# HOTEL FLORIDA – PRICE LIST 2017

RATES IN EURO, ON BED AND BREAKFAST BASIS, PER PERSON PER NIGHT

Valid for a minimum stay of 3 nights - Extra charge for a stay of less than 3 Nights: 10% per person/night

	<b>A</b>	<b>B</b>	<b>C</b>	<b>D</b>	<b>E</b>
	22.04 - 19.05 23.09 - 14.10	12.04 - 21.04 20.05 - 31.05 09.09 - 22.09	01.06 - 30.06 02.09 - 08.09	01.07 - 04.08 20.08 - 01.09	05.08 - 19.08
<b>STANDARD ROOM</b> Occupation min. 2 people / max. 3 people	69,90	79,60	84,70	89,80	101,90
<b>COMFORT ROOM</b> Occupation min. 2 people / max. 3 people	74,90	84,60	89,70	94,80	106,90
<b>JUNIORSUITE</b> Occupation min. 2 people / max. 4 people	82,00	94,40	100,60	106,60	121,20
<b>JUNIORSUITE DELUXE SEA VIEW</b> Occupation min. 2 people / max. 2 people	94,80	109,10	116,40	123,40	140,40
<b>FAMILY</b> Occupation min. 3 people / max. 4 people	74,00	85,20	91,00	96,50	109,80
<b>SUITE</b> Occupation min. 2 people / max. 2 people	92,50	105,70	113,20	120,00	137,00
<b>FAMILY SUPERIOR</b> Occupation min. 4 people / max. 5 people	79,10	90,90	96,80	102,60	116,70
<b>SUITE SUPERIOR</b> Occupation min. 4 people / max 5 people	84,30	96,60	102,60	108,70	123,50
<b>SUITE MAJOR</b> Occupation min. 4 people / max. 6 people	88,90	102,30	108,90	115,60	131,40
<b>SUITE ROYALE</b> Occupation min. 2 people / max. 2 people	113,30	130,70	139,70	148,10	168,80
<b>EXTRA CHARGES</b>					
<b>EXTRA CHARGE FOR DOUBLE STANDAR ROOM AS SINGLE USE</b>	+ 50%	+ 50%	+ 50%	+ 50%	+ 50%
<b>EXTRA CHARGE FOR FAMILY ROOM OCCUPATION 2 PEOPLE</b>	+ 25%	+ 25%	+ 25%	+ 25%	+ 25%
<b>EXTRA CHARGE FOR THE HALF BOARD</b>	+ 15,00	+ 15,00	+ 15,00	+ 15,00	+ 15,00
<b>EXTRA CHARGE FOR THE GARAGE</b>	FREE	+ 6,00	+ 6,00	+ 6,00	+ 6,00

## CHILDREN - EXTRA BED

**IN STANDARD ROOM, COMFORT ROOM, JUNIORSUITE, WITH 2 FULL PAYING - PEOPLE**

from 0 to 5 years of age FREE  
from 6 to 8 years of age - 50%  
from 9 to 12 years of age - 30%  
from 13 to 99 years of age - 20%

**IN FAMILY, FAMILY SUPERIOR, SUITE SUPERIOR, SUITE MAJOR WITH 2 FULL PAYING - PEOPLE**

from 0 to 5 years of age - 50%  
from 6 to 8 years of age - 25%  
from 9 to 12 years of age - 15%  
from 13 to 99 years of age - 10%

## SPECIAL OFFERS

17.04 – 20.04  
24.04 – 27.04  
02.05 – 20.05  
24.09 – 14.10

**4 = 3**

12.04 – 01.05  
18.05 – 10.06  
09.09 – 23.09

**7 = 6**

05.06 – 04.08  
19.08 – 08.09

**14 = 13**

FOR ALL THE RESERVATIONS RECEIVED WITHIN 30TH APRIL 2017 YOU WILL GET 5 % DISCOUNT ON THE AMOUNT OF THE TREATMENT CHOSEN (EXTRAS, EXTRA CHARGES AND CITY TAX EXCLUDED).

**GARAGE FREE FOR MINIMUM STAYS OF 14 OR MORE DAYS**