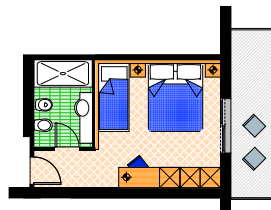


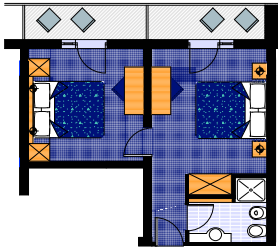
**Standard Room
 Comfort Room**

ca. 19,00 m²
 Occupation min. 2 people - max 3 people



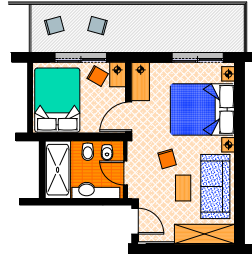
Triple Room

ca. 20,00 m²
 Occupation min. 2 people - max 3 people



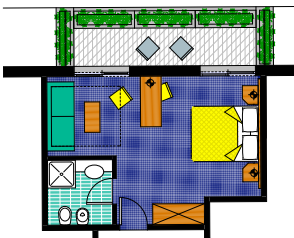
Family

ca. 30,00 m²
 Occupation min. 3 people - max 4 people



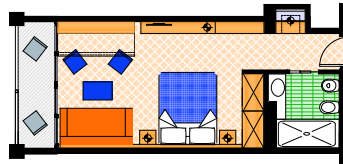
Family Superior

ca. 30,00 m², small living room
 Occupation min. 4 people - max 5 people



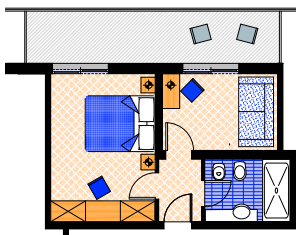
Juniorsuite

ca. 25,00 m²
 Occupation min. 2 people - max 4 people



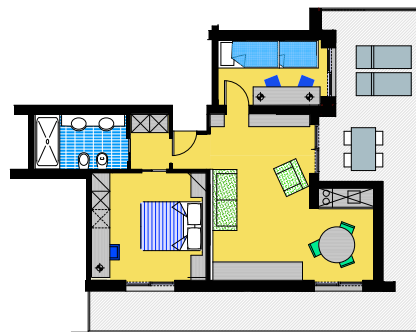
Juniorsuite Deluxe sea view

ca. 26,00 m²
 Occupation min. 2 people - max 2 people



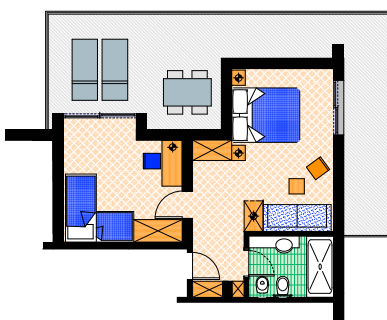
Suite

ca. 26,00 m²
 Occupation min. 2 people - max 2 people



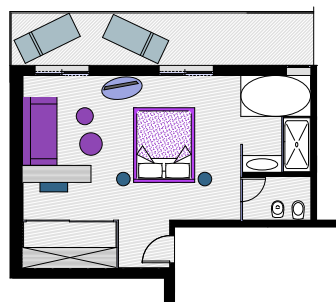
Suite Major

ca. 45,00 m², small kitchenette, small living room
 Occupation min. 4 people - max 6 people



Suite Superior

ca. 32,00 m², small living room
 Occupation min. 4 people - max 5 people



Suite Royale sea view

ca. 38,00 m², king size bed, whirlpool
 Occupation min. 2 people - max 2 people

33054 Lignano Sabbiadoro (Ud)

Via dell'Arenile, 22

Tel. +39.0431.720101 / 71134

Fax +39.0431.472005

mail@hotelflora.net - www.hotelflora.net

skype: hotelflora3

Winter mobile phone +39.348.8083564

The Hotel Florida is a family - managed establishment, where to spend the most beautiful days of the year in a natural and cheerful atmosphere, or in absolute peace: just as you prefer.

Recently renewed, our hotel is ideally located in a quiet area, nestled in the pinewood, both close to the sandy beach and to the city centre.

Besides the facilities that Lignano puts at your disposal, our hotel offers you a wide range of amusement possibilities, such as: in the indoor wellness area, on 6th floor, steam bath, sauna, relax zone, sunbed and a small fitness centre; on the 7th floor, a heated indoor swimming pool with whirlpool and waves, lounge bar overlooking the sea where to enjoy à la carte small lunches and a hot/cold buffet.

On the 8th floor, a panoramic solarium with deck lounges. Free towels for the swimming pool and for the wellness centre.

On the ground floor, a comfortable bar with a Continental breakfast service starting from 11:00 am, a lobby and sheltered terrace, a mini club and a small outdoor playground, where to entertain our little Guests. Free wireless connection in the whole structure, as well as a giant screen with satellite connection to foreign channels allowing the vision of the most common events.

Bicycles, a reserved beach, air-conditioning/heating are included while the parking places in the detached parking garage are to be extra charged.

Our rooms are of different typologies: standard room, comfort room, junior suite, suite superior, suite royal, suite major, family, family superior and juniorsuite deluxe with sea view, are all provided with private bathroom (box-shower/wc), hairdryer, balcony, autonomous air-conditioning and heating, fridge mini-bar, direct dial telephone, satellite flat screen, and in-room safety box.

Particular attention to our cuisine, enriched with a generous breakfast buffet with pastries, and much more from 07:30 until 11:00 am, and rich dinner buffet of salads, vegetables, and appetizers during the dinner served from 19:00 until 20:30 o'clock. A baby menu for our little Guests.

To be extra charged: tanning bed, fridge minibar, garage and small lunch.

On request and to be extra charged: massages, pranotherapy, golf car, beauty treatments.

HOTEL FLORIDA – PRICE LIST 2021

RATES IN EURO, ON BED AND BREAKFAST BASIS, PER PERSON PER NIGHT

Valid for a minimum stay of 3 nights - Extra charge for a stay of less than 3 Nights: 10% per person/night

THE TOURIST TAX IS NOT INCLUDED IN THE RATES

| | A | B | C | D | E |
|--|---|--|--|--------------------------------|---------------|
| | 15.04 - 30.04 09.05 - 12.05 01.10 - 09.10 | 01.05 - 08.05 16.05 - 19.05 24.05 - 28.05 19.09 - 30.09 | 13.05 - 15.05 20.05 - 23.05 29.05 - 02.07 05.09 - 18.09 | 03.07 - 06.08 22.08 - 04.09 | 07.08 - 21.08 |
| STANDARD ROOM Occupation min. 2 people / max. 3 people | 73,00 | 83,20 | 88,50 | 93,80 | 106,50 |
| COMFORT ROOM Occupation min. 2 people / max. 3 people | 79,90 | 90,20 | 95,60 | 101,10 | 114,00 |
| JUNIORSUITE Occupation min. 2 people / max. 4 people | 85,70 | 98,70 | 105,20 | 111,50 | 126,70 |
| JUNIORSUITE DELUXE SEA VIEW Occupation min. 2 people / max. 2 people | 101,10 | 116,30 | 124,10 | 131,60 | 149,70 |
| FAMILY Occupation min. 3 people / max. 4 people | 78,80 | 90,80 | 97,10 | 102,90 | 117,00 |
| SUITE Occupation min. 2 people / max. 2 people | 98,60 | 112,70 | 120,70 | 128,00 | 146,10 |
| FAMILY SUPERIOR Occupation min. 4 people / max. 5 people | 84,30 | 97,00 | 103,20 | 109,40 | 124,40 |
| SUITE SUPERIOR Occupation min. 4 people / max 5 people | 89,90 | 103,00 | 109,40 | 115,90 | 131,70 |
| SUITE MAJOR Occupation min. 4 people / max. 6 people | 94,70 | 109,10 | 116,10 | 123,30 | 140,10 |
| SUITE ROYALE Occupation min. 2 people / max. 2 people | 120,80 | 139,40 | 149,00 | 157,90 | 180,00 |
| EXTRA CHARGES | | | | | |
| EXTRA CHARGE FOR STANDARD ROOM AS SINGLE USE | + 50% | + 50% | + 50% | + 50% | + 50% |
| EXTRA CHARGE FOR FAMILY ROOM OCCUPATION 2 PEOPLE | + 25% | + 25% | + 25% | + 25% | + 25% |
| EXTRA CHARGE FOR THE HALF BOARD | + 15,00 | + 15,00 | + 15,00 | + 15,00 | + 15,00 |
| EXTRA CHARGE FOR THE GARAGE | FREE | + 7,00 | + 7,00 | + 7,00 | + 7,00 |

CHILDREN - EXTRA BED

IN STANDARD ROOM, JUNIORSUITE, WITH 2 FULL PAYING - PEOPLE

from 0 to 5 years of age FREE
from 6 to 8 years of age - 50%
from 9 to 12 years of age - 30%
from 13 to 99 years of age - 20%

IN FAMILY, FAMILY SUPERIOR, SUITE SUPERIOR, SUITE MAJOR WITH 2 FULL PAYING - PEOPLE

from 0 to 5 years of age - 50%
from 6 to 8 years of age - 25%
from 9 to 12 years of age - 15%
from 13 to 99 years of age - 10%

FOR ALL THE RESERVATIONS RECEIVED WITHIN 28TH FEBRAURY 2021 YOU WILL GET 5 % DISCOUNT ON THE AMOUNT OF THE CHOSEN TREATMENT, FROM 1st MARCH WITHIN APRIL 30TH 2020 YOU WILL GET 5 % DISCOUNT ON THE AMOUNT OF THE CHOSEN TREATMENT (EXTRAS, EXTRA CHARGES AND CITY TAX EXCLUDED).

GARAGE FREE FOR MINIMUM STAYS OF 14 OR MORE DAYS