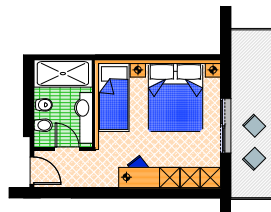


**Standard Room  
 Comfort Room**

ca. 19,00 m<sup>2</sup>

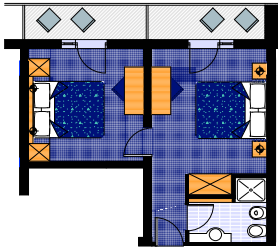
Occupation min. 2 people - max 3 people



**Triple Room**

ca. 20,00 m<sup>2</sup>

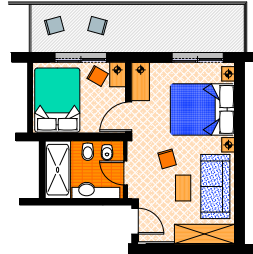
Occupation min. 2 people - max 3 people



**Family**

ca. 30,00 m<sup>2</sup>

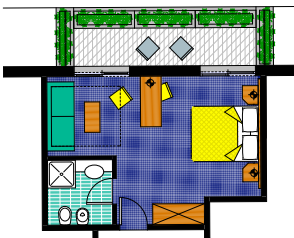
Occupation min. 3 people - max 4 people



**Family Superior**

ca. 30,00 m<sup>2</sup>, small living room

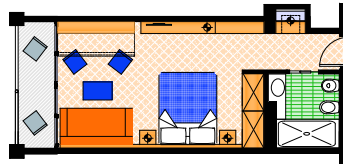
Occupation min. 4 people - max 5 people



**Juniorsuite**

ca. 25,00 m<sup>2</sup>

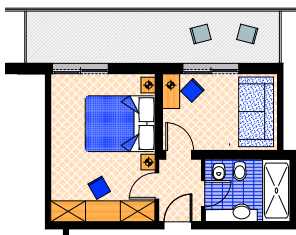
Occupation min. 2 people - max 4 people



**Juniorsuite Deluxe sea view**

ca. 26,00 m<sup>2</sup>

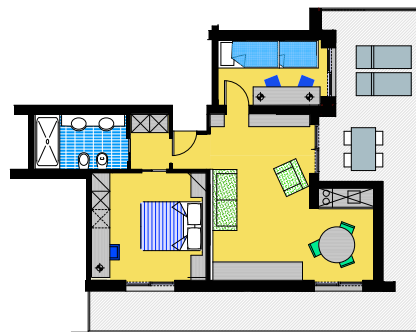
Occupation min. 2 people - max 2 people



**Suite**

ca. 26,00 m<sup>2</sup>

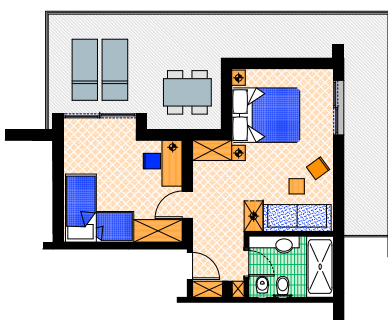
Occupation min. 2 people - max 2 people



**Suite Major**

ca. 45,00 m<sup>2</sup>, small kitchenette, small living room

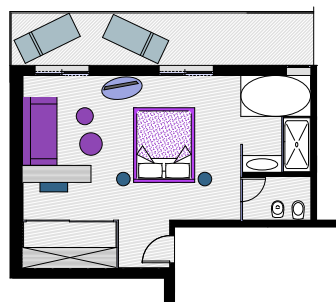
Occupation min. 4 people - max 6 people



**Suite Superior**

ca. 32,00 m<sup>2</sup>, small living room

Occupation min. 4 people - max 5 people



**Suite Royale sea view**

ca. 38,00 m<sup>2</sup>, king size bed, whirlpool

Occupation min. 2 people - max 2 people

33054 Lignano Sabbiadoro (Ud)

Via dell'Arenile, 22

Tel. +39.0431.720101 / 71134

Fax +39.0431.472005

mail@hotelflorida.net - www.hotelflorida.net

skype: hotelflorida3

Winter mobile phone +39.348.8083564

The Hotel Florida is a family - managed establishment, where to spend the most beautiful days of the year in a natural and cheerful atmosphere, or in absolute peace: just as you prefer.

Recently renewed, our hotel is ideally located in a quiet area, nestled in the pinewood, both close to the sandy beach and to the city centre.

Besides the facilities that Lignano puts at your disposal, our hotel offers you a wide range of amusement possibilities, such as: in the indoor wellness area, on 6th floor, steam bath, sauna, relax zone, sunbed and a small fitness centre; on the 7th floor, a heated indoor swimming pool with whirlpool and waves, lounge bar overlooking the sea where to enjoy à la carte small lunches and a hot/cold buffet.

On the 8th floor, a panoramic solarium with deck lounges. Free towels for the swimming pool and for the wellness centre.

On the ground floor, a comfortable bar with a Continental breakfast service starting from 11:00 am, a lobby and sheltered terrace, small outdoor playground, where to entertain our little Guests. Free wireless connection in the whole structure, as well as a giant screen with satellite connection to foreign channels allowing the vision of the most common events.

Bicycles, a reserved beach, air-conditioning/heating are included while the parking places in the detached parking garage are to be extra charged.

Our rooms are of different typologies: standard room, comfort room, junior suite, suite superior, suite royal, suite major, family, family superior and juniorsuite deluxe with sea view, are all provided with private bathroom (box-shower/wc), hairdryer, balcony, autonomous air-conditioning and heating, fridge mini-bar, direct dial telephone, satellite flat screen, and in-room safety box.

Particular attention to our cuisine, enriched with a generous breakfast buffet with pastries, and much more from 07:30 until 11:00 am, and rich dinner buffet of salads, vegetables, and appetizers during the dinner served from 19:00 until 20:30 o'clock. A baby menu for our little Guests.

To be extra charged: tanning bed, fridge minibar, garage and small lunch.

On request and to be extra charged: massages, beauty treatments.

# HOTEL FLORIDA – PRICE LIST 2024

RATES IN EURO, ON BED AND BREAKFAST BASIS, PER PERSON PER NIGHT

Valid for a minimum stay of 3 nights - Extra charge for a stay of less than 3 Nights: 10% per person/night

THE TOURIST TAX IS NOT INCLUDED IN THE RATES

	<b>A</b> 18.04-08.05	<b>B</b> 09.05-16.05 14.09-29.09	<b>C</b> 17.05-28.06 31.08-13.09	<b>D</b> 29.06-02.08 19.08-30.08	<b>E</b> 03.08-18.08
<b>STANDARD ROOM</b> Occupation min. 2 people / max. 3 people	85,00	97,00	103,00	109,00	124,00
<b>COMFORT ROOM</b> Occupation min. 2 people / max. 3 people	95,50	107,80	114,30	120,90	136,30
<b>JUNIORSUITE</b> Occupation min. 2 people / max. 4 people	102,50	118,00	125,70	133,30	151,50
<b>JUNIORSUITE DELUXE SEA VIEW</b> Occupation min. 2 people / max. 2 people	120,90	139,10	148,40	157,40	179,00
<b>FAMILY</b> Occupation min. 3 people / max. 4 people	94,20	108,50	116,20	123,00	140,00
<b>SUITE</b> Occupation min. 2 people / max. 2 people	117,80	134,80	144,30	153,00	174,70
<b>FAMILY SUPERIOR</b> Occupation min. 4 people / max. 5 people	100,80	116,00	123,40	130,80	148,70
<b>SUITE SUPERIOR</b> Occupation min. 4 people / max 5 people	107,50	123,20	130,80	138,60	157,50
<b>SUITE MAJOR</b> Occupation min. 4 people / max. 6 people	113,20	130,50	138,90	147,50	167,50
<b>SUITE ROYALE SEA VIEW</b> Occupation min. 2 people / max. 2 people	144,40	166,70	178,20	188,80	215,30
<b>EXTRA CHARGES</b>					
<b>EXTRA CHARGE FOR STANDARD ROOM AS SINGLE USE</b>	+ 50%	+ 50%	+ 50%	+ 50%	+ 50%
<b>EXTRA CHARGE FOR FAMILY ROOM OCCUPATION 2 PEOPLE</b>	+ 25%	+ 25%	+ 25%	+ 25%	+ 25%
<b>EXTRA CHARGE FOR THE HALF BOARD</b>	+ 22,00	+ 22,00	+ 22,00	+ 22,00	+ 22,00
<b>EXTRA CHARGE FOR THE GARAGE</b>	FREE	+ 8,00	+ 8,00	+ 8,00	+ 8,00

## CHILDREN - EXTRA BED

### IN STANDARD ROOM, COMFORT ROOM, JUNIORSUITE, WITH 2 FULL PAYING - PEOPLE

from 0 to 5 years of age FREE  
 from 6 to 8 years of age - 50%  
 from 9 to 12 years of age - 30%  
 from 13 to 99 years of age - 20%

### IN FAMILY, FAMILY SUPERIOR, SUITE SUPERIOR, SUITE MAJOR WITH 2 FULL PAYING - PEOPLE

from 0 to 5 years of age - 50%  
 from 6 to 8 years of age - 25%  
 from 9 to 12 years of age - 15%  
 from 13 to 99 years of age - 10%

FOR ALL THE RESERVATIONS RECEIVED WITHIN 31ST JANUARY 2024 YOU WILL GET 10% DISCOUNT ON THE AMOUNT OF THE TREATMENT CHOSEN, FROM THE 1ST FEBRUARY WITHIN 30TH APRIL 2024 YOU WILL GET 5% DISCOUNT ON THE AMOUNT OF THE TREATMENT CHOSEN (EXTRAS AND EXTRA CHARGES EXCLUDED).

GARAGE FREE FOR MINIMUM STAYS OF 14 OR MORE DAYS